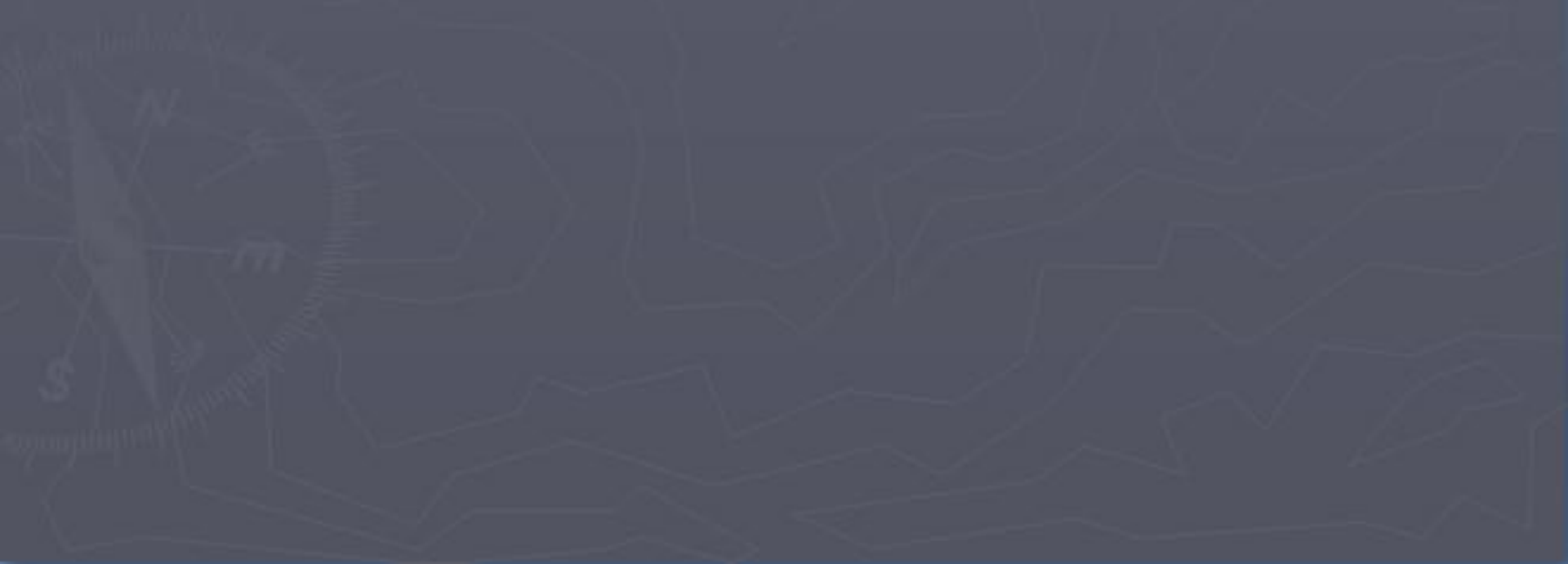
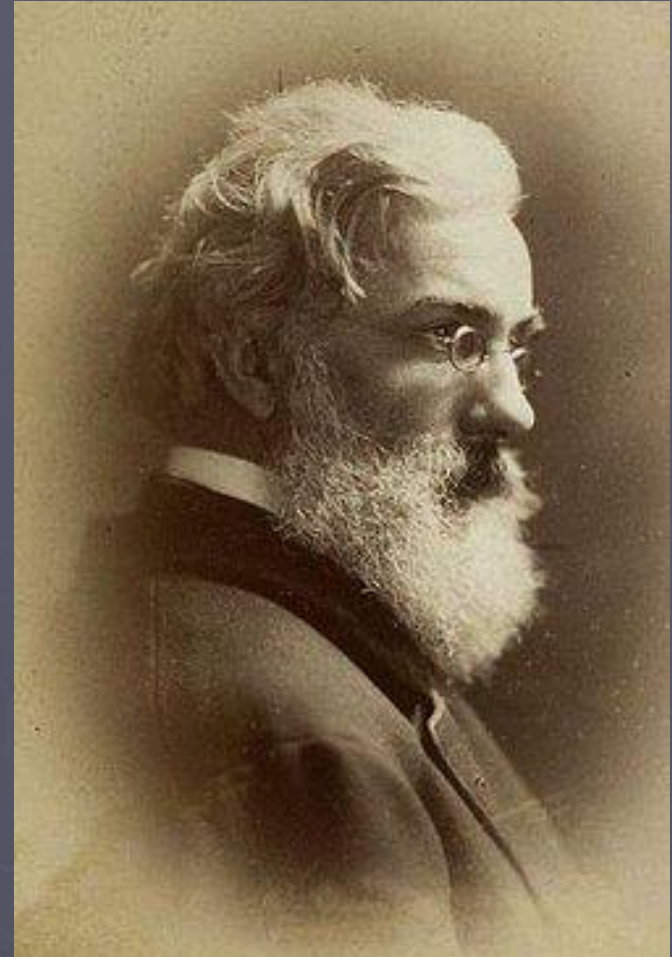


Ravenstein's 'laws' of Migration



Background

- Formulated by Ernst Georg Ravenstein
 - Originally from Frankfurt, Germany
 - Made his observations based on migration to the United Kingdom
- Published in 1885



1. Most migration is over short distances



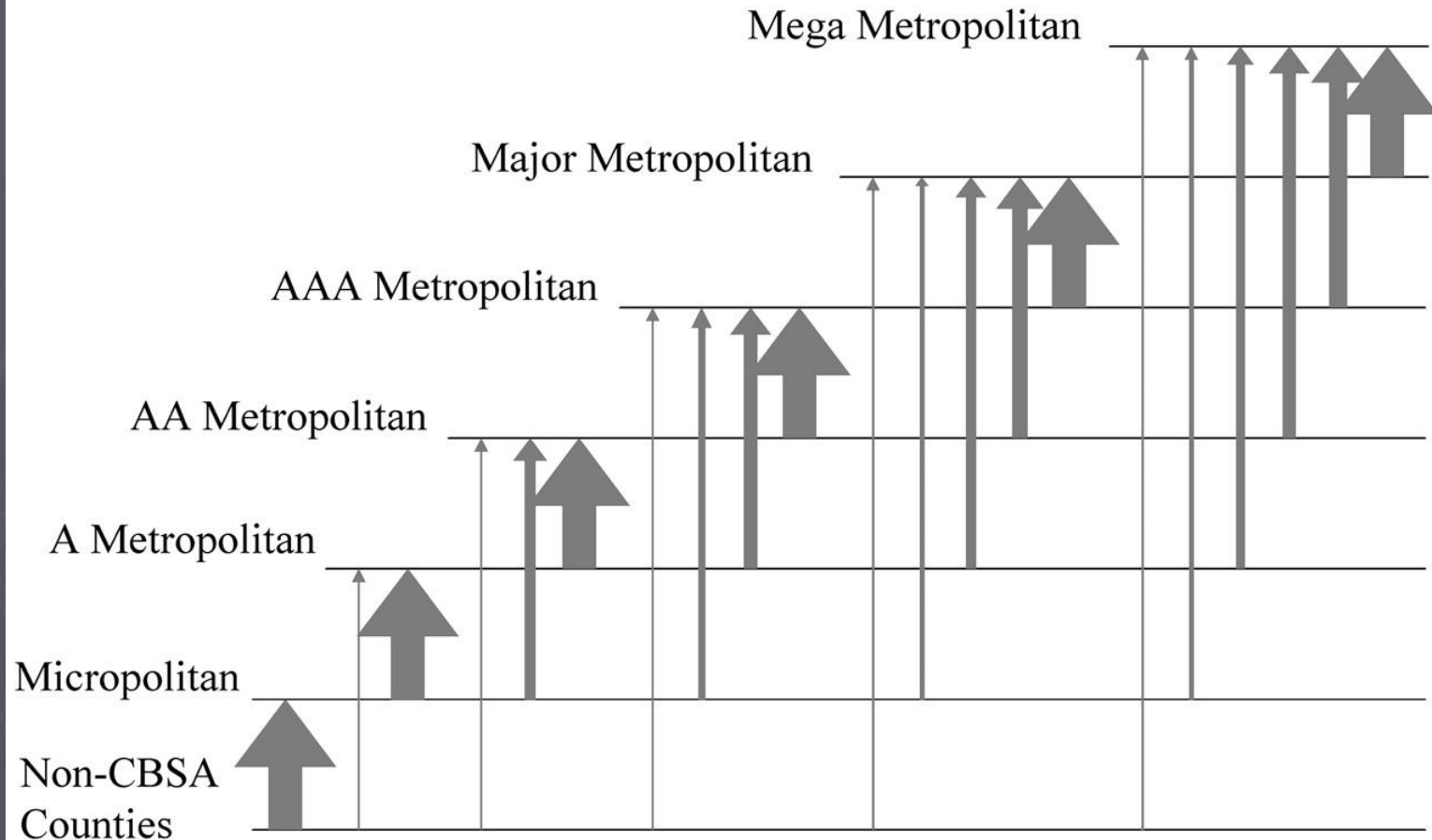
2. Migration occurs in steps

Legend

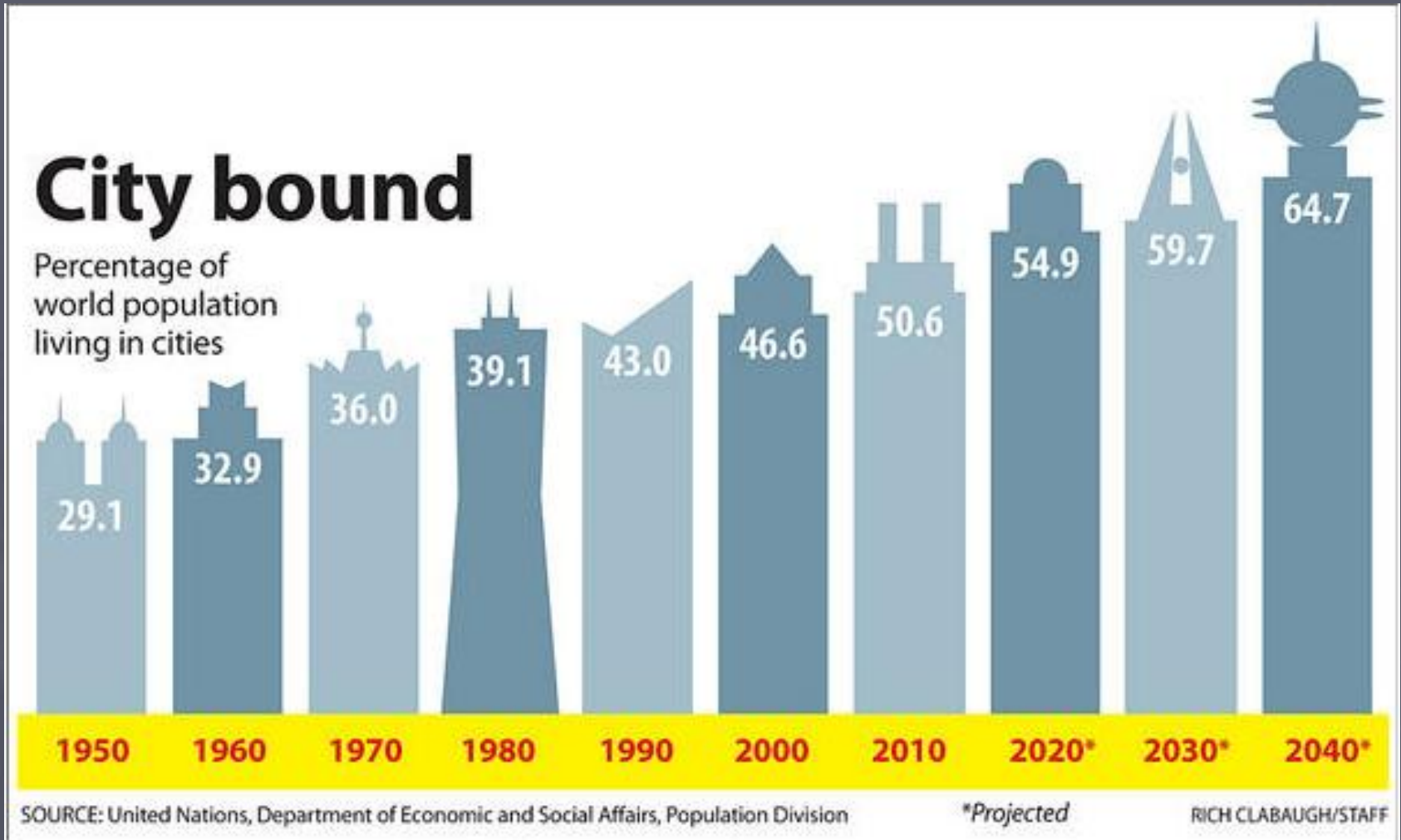
Width of arrows indicates relative demographic effectiveness or volumes of net migration.

*All Flows Up
the Hierarchy*

*(No Flows Down
the Hierarchy)*

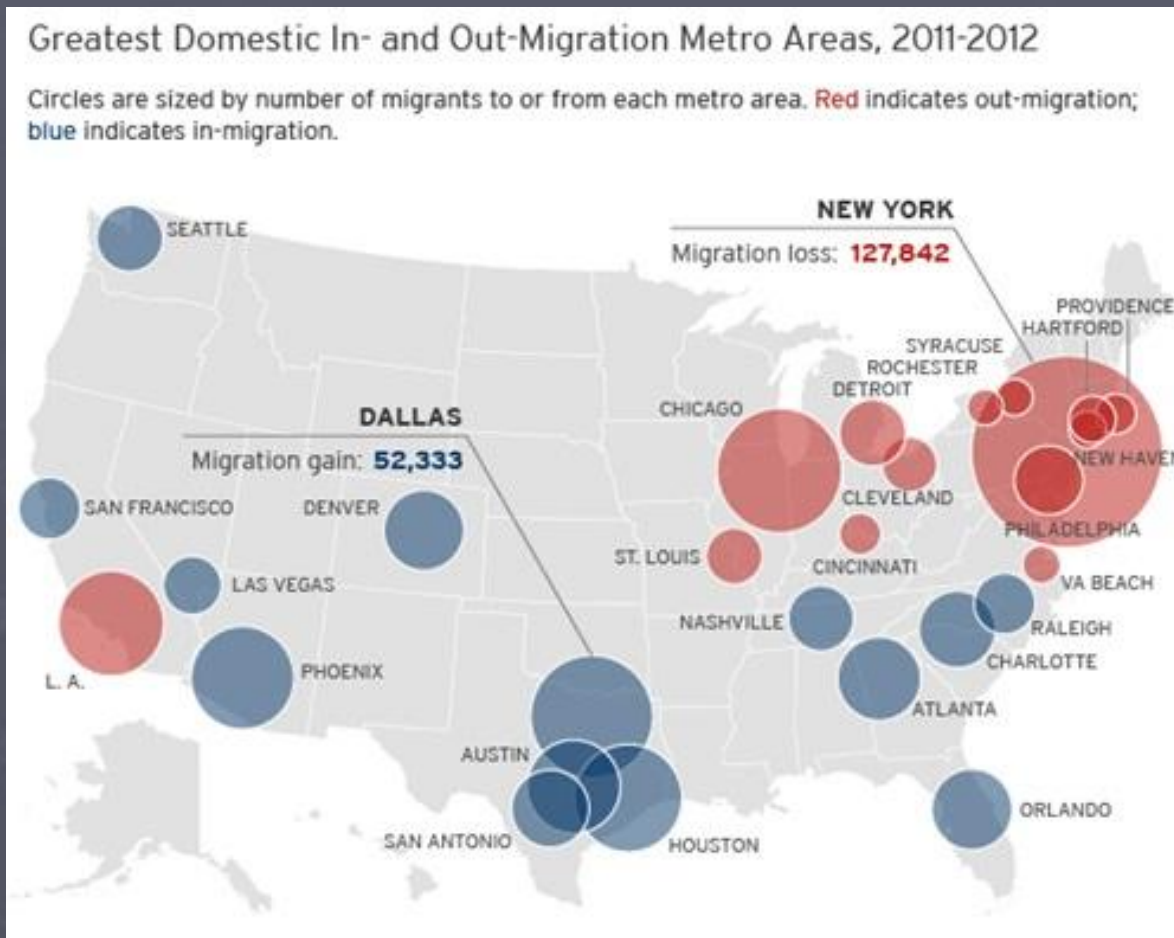


3. Long-range migrants usually move to urban areas



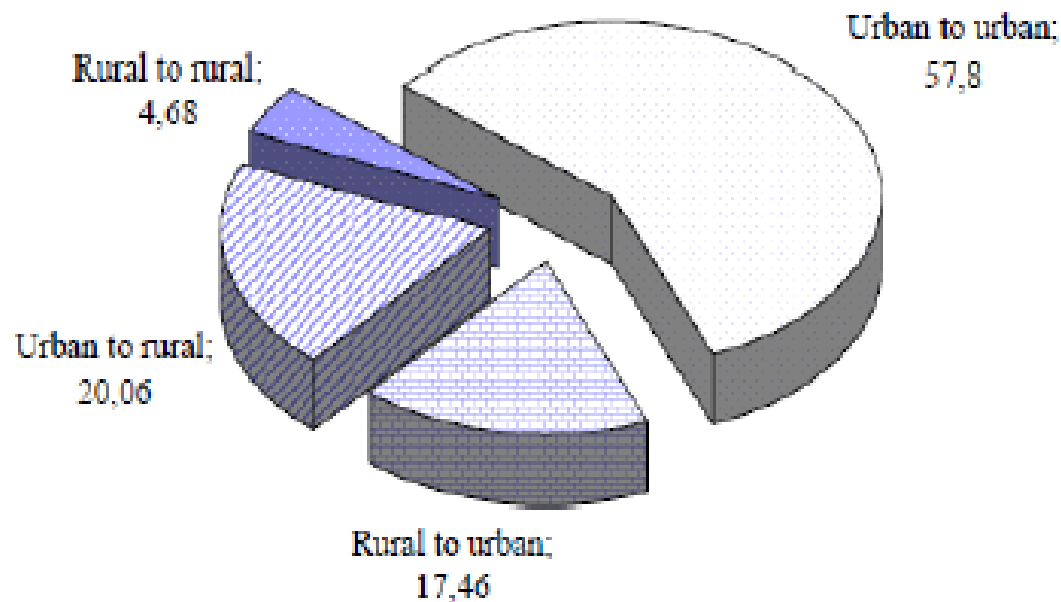
4. Each migration produces a movement in the opposite direction

- Although not necessarily in the same volume



5. Rural dwellers are more migratory than urban dwellers

Figure 1: In-migration by places of residence (%), 1995-2000



Still true?

6. Within their own country females are more migratory than males, but males are more migratory over long distances

“Out of 309 million internal migrants, 70.7 per cent are women (218 million) (Census of India 2001).”

- UNICEF Report on India Internal Migratory Patterns

7. Most migrants are adults

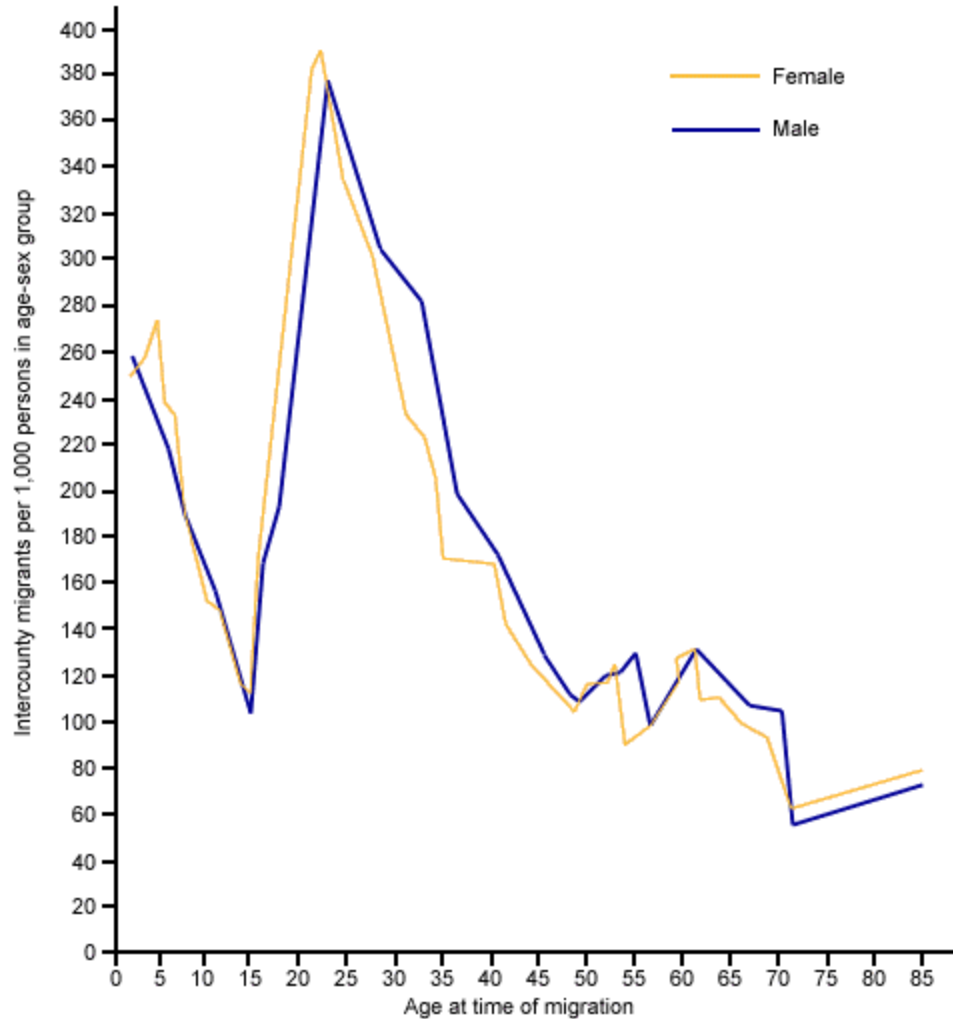


FIGURE 10-1: Rates of Migration by Age: United States, 1975 - 1980

8. Large towns grow more by migration than by natural increase



Las Vegas: A Landsat Satellite Perspective

Las Vegas, Nevada is the fastest growing major metropolitan community in the United States. A unique perspective on that growth is available because of the U.S. Geological Survey's 35 years of Landsat satellite acquisitions.



May, 1973
Population 358,400



June, 1991
Population 937,261

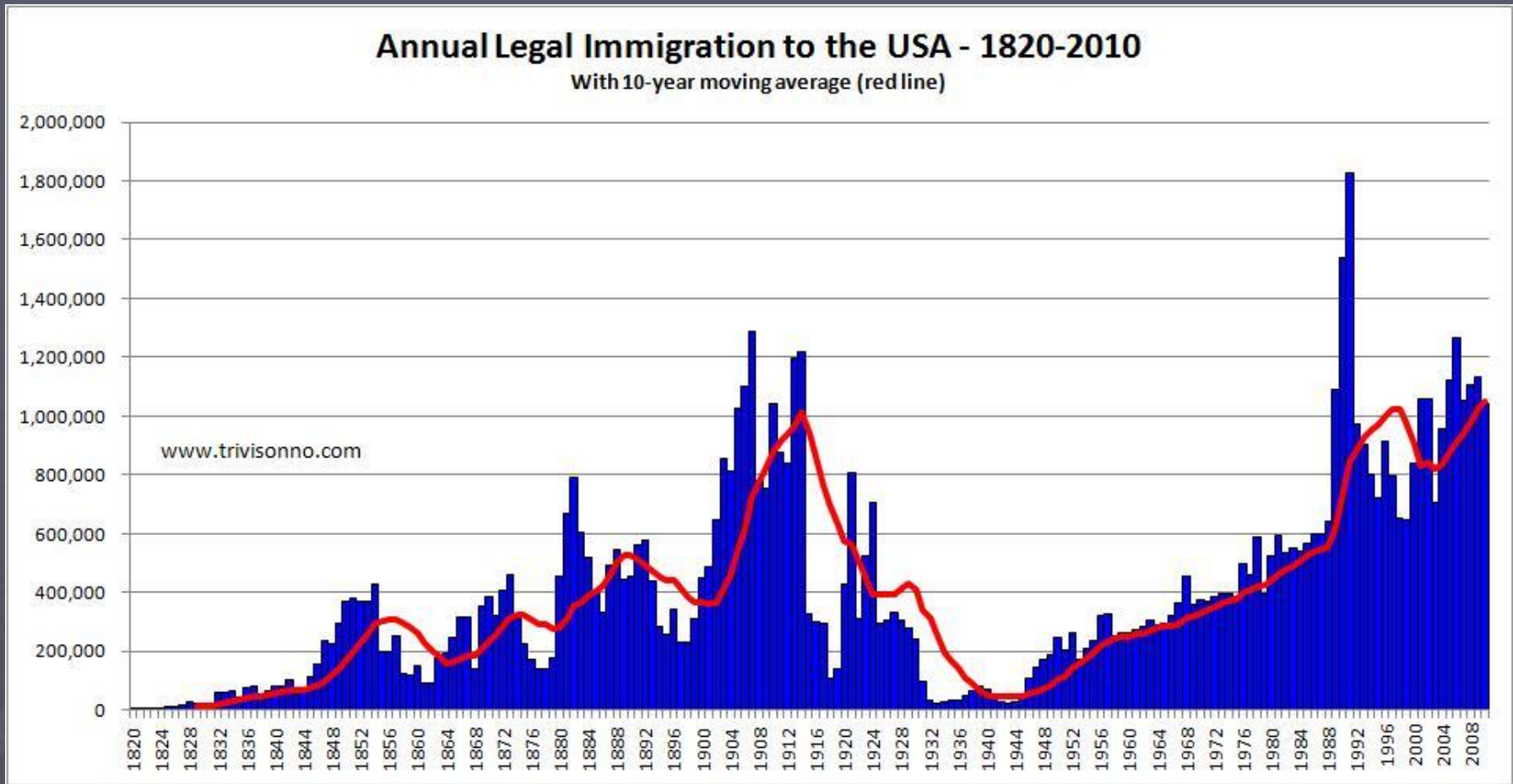


May, 2000
Population 1,563,282



February, 2006
Population 2,013,267

9. Migration increases with economic development



10. Migration is mostly due to economic causes

